

FLOORS 20 MM

Mystone Moon20



MARAZZI



Mystone Moon20

Like light across stone, Mystone Moon20 shapes outdoor spaces with an essential, crisp and confident language. This porcelain stoneware collection, designed exclusively for outdoor settings, comes in White, Grey and Anthracite in the 60x120 size. Its Tecnico finish combines tactile depth with high performance, delivering reliability and design continuity for terraces, patios, walkways and other outdoor spaces with a minimal, contemporary and rigorous spirit.

M8C0 Moon20 White Coprimuretto Lavorazione 2 Lati Lunghi Rt 40x120cm
M8AW Moon20 White Coprimuretto Lavorazione 3 Lati Rt 40x120cm
M874 Moon20 White Elemento L Rt 15x120cm
M7XR Mystone Moon20 White Strutturato Rettificato 60x120cm







Mystone Moon20 Index

M8C0 Moon20 White Coprimuretto Lavorazione 2 Lati Lunghi Rt 40x120cm
M8AW Moon20 White Coprimuretto Lavorazione 3 Lati Rt 40x120cm
M874 Moon20 White Elemento L Rt 15x120cm
M7XR Mystone Moon20 White Strutturato Rettificato 60x120cm

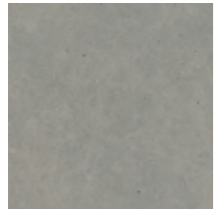
Mystone Moon20

- Colorbody Fine Porcelain Stoneware



Anthracite

Formato	Superfici	Codice	Descrizione	Spessore	Rett.	Caratteristiche tecniche	Utilizzo	Premium Tech	R	BCR	Pendulum Class	Pend. PTV >36	Australian pendulum	DCOF	Destinazioni d'uso	V	Pezzi per scatola	Mq	Kg	Scatole per pallet	Mq	Kg
60x120cm	Structured Surface	M7YA	Mystone Moon20 Anthracite Strutturato Rettificato	MM 20	.	Frost proof, Resistance deep abrasion	Floor	High Performance	R11C	> 0.40	Class 3	36+ Slider 96	>= 0.60	H	V2	1	0,72	32,10	36	25,92	1.155,60	



Grey

Formato	Superfici	Codice	Descrizione	Spessore	Rett.	Caratteristiche tecniche	Utilizzo	Premium Tech	R	BCR	Pendulum Class	Pend. PTV >36	Australian pendulum	DCOF	Destinazioni d'uso	V	Pezzi per scatola	Mq	Kg	Scatole per pallet	Mq	Kg
60x120cm	Structured Surface	M7XS	Mystone Moon20 Grey Strutturato Rettificato	MM 20	.	Frost proof, Resistance deep abrasion	Floor	High Performance	R11C	> 0.40	Class 3	36+ Slider 96	>= 0.60	H	V2	1	0,72	31,70	36	25,92	1.141,35	



White

Formato	Superfici	Codice	Descrizione	Spessore	Rett.	Caratteristiche tecniche	Utilizzo	Premium Tech	R	BCR	Pendulum Class	Pend. PTV >36	Australian pendulum	DCOF	Destinazioni d'uso	V	Pezzi per scatola	Mq	Kg	Scatole per pallet	Mq	Kg
60x120cm	Structured Surface	M7XR	Mystone Moon20 White Strutturato Rettificato	MM 20	.	Frost proof, Resistance deep abrasion	Floor	High Performance	R11C	> 0.40	Class 3	36+ Slider 96	>= 0.60	H	V2	1	0,72	31,94	36	25,92	1.149,96	

Legenda

Destinazioni d'uso

D
Tiles suitable only for residential bathrooms and bedrooms; any type of abrasion must be avoided.

E
Tiles suitable for any room of a house except for entrance areas and kitchens. Low stress abrasive wear.

F
Tiles suitable for any room of a house without direct access from the outside or access not protected by doormats. Average stress abrasive wear.

G
Materials suitable for rooms subject to medium-heavy abrasion, such as detached houses and light-traffic commercial buildings.

H
Materials suitable for situations of relatively hard abrasion in environments without protection against scratching, both public and private.

Variazioni cromatiche

V0
Monochromatic - V0: tiles of the same shade are very uniform, in just one colour

V1
Uniform appearance - V1: uniform colour with only minimal differences between tiles in the same production run

V2
Slight variation - V2: clearly distinguishable differences in texture and pattern within the same production run

V3
Moderate variation - V3: significant variation in texture, pattern and colour from tile to tile within the same production run. The colour range should be viewed before selecting the material

V4
Substantial/random variation - V4: random differences from tile to tile. One tile may have totally different texture and colour from another. The colour range should be viewed before selecting the material

Certificazioni



ISO 14001



Greenguard Certification



CCC



ISO 9001



LEED Credits



CE 001MRZI



Green Building Council



FDES



UKCA 001MRZUK



GPP



Declare



SASO



EPD Italy



HPD



ISO 17889-1



CAM Sassuolo

© Copyright by Marazzi Group S.r.l.
All rights reserved, Marazzi Group Srl a Socio Unico
Viale Regina Pacis, 39 41049 Sassuolo (MO) Italy
T +39 0536 860800 F +39 0536 860644
info@marazzi.it www.marazzi.it

La riproduzione dei colori è approssimativa. Le tabelle con i dati riferiti ai contenuti per scatole ed ai pesi degli imballi sono aggiornate al momento della stampa del catalogo, pertanto i dati elencati possono subire variazioni.

Marazzi Group ha la facoltà esclusiva di modificare e sostituire, anche solo parzialmente i componenti dei sistemi illustrati in questo folder, senza l'obbligo di darne preavviso.



MARAZZI