

FLOORS 20 MM

Plaster20



MARAZZI

A close-up photograph of a white wheel, likely from a bicycle or scooter, resting on a grey, textured surface. The surface has a fine, pebbled texture and a dark horizontal line running across it. The wheel is positioned in the upper left corner, with its spokes and tire visible. The lighting is soft, highlighting the texture of the surface and the smoothness of the wheel.

Plaster20

Like a material shaped for open air, Plaster20 interprets concrete in 20 mm porcelain stoneware for residential and commercial outdoor spaces. The range includes Sand, Grey and Anthracite in the 60x60 size, designed for adhesive installation or gravel laying. The surface combines practicality and formal rigor, offering a reliable solution for paths, lounge areas and exterior settings that require visual continuity, durability in use and a coherent, stable image.



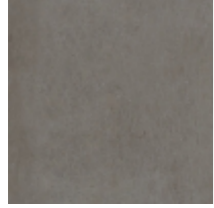




Plaster20 Index

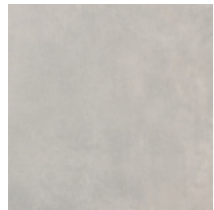
Plaster20

- Colorbody Fine Porcelain Stoneware



Anthracite

Formato	Superfici	Codice	Descrizione	Spessore	Rett.	Caratteristiche tecniche	Utilizzo	Premium Tech	R	BCR	Pendulum Class	Pend. PTV >36	Australian pendulum	DCOF	Destinazioni d'uso	V	Pezzi per scatola	Mq	Kg	Scatole per pallet	Mq	Kg
60x60cm	Structured Surface	MMCP	Plaster Anthracite 20	MM 20	.	Frost proof, Resistance deep abrasion	Floor		R11B	> 0.40	Class 3	36+ Slider 96		>= 0.60	H	V2	2	0,72	32,46	32	23,04	1.038,77



Grey

Formato	Superfici	Codice	Descrizione	Spessore	Rett.	Caratteristiche tecniche	Utilizzo	Premium Tech	R	BCR	Pendulum Class	Pend. PTV >36	Australian pendulum	DCOF	Destinazioni d'uso	V	Pezzi per scatola	Mq	Kg	Scatole per pallet	Mq	Kg
60x60cm	Structured Surface	MMCN	Plaster Grey 20	MM 20	.	Frost proof, Resistance deep abrasion	Floor		R11B	> 0.40	Class 3	36+ Slider 96		>= 0.60	H	V2	2	0,72	31,61	32	23,04	1.011,41



Sand

Formato	Superfici	Codice	Descrizione	Spessore	Rett.	Caratteristiche tecniche	Utilizzo	Premium Tech	R	BCR	Pendulum Class	Pend. PTV >36	Australian pendulum	DCOF	Destinazioni d'uso	V	Pezzi per scatola	Mq	Kg	Scatole per pallet	Mq	Kg
60x60cm	Structured Surface	MMCM	Plaster Sand 20	MM 20	.	Frost proof, Resistance deep abrasion	Floor		R11B	> 0.40	Class 3	36+ Slider 96		>= 0.60	H	V2	2	0,72	32,54	32	23,04	1.041,12

Legenda

Destinazioni d'uso

D
Tiles suitable only for residential bathrooms and bedrooms; any type of abrasion must be avoided.

E
Tiles suitable for any room of a house except for entrance areas and kitchens. Low stress abrasive wear.

F
Tiles suitable for any room of a house without direct access from the outside or access not protected by doormats. Average stress abrasive wear.

G
Materials suitable for rooms subject to medium-heavy abrasion, such as detached houses and light-traffic commercial buildings.

H
Materials suitable for situations of relatively hard abrasion in environments without protection against scratching, both public and private.

Variazioni cromatiche

V0
Monochromatic - V0: tiles of the same shade are very uniform, in just one colour

V1
Uniform appearance - V1: uniform colour with only minimal differences between tiles in the same production run

V2
Slight variation - V2: clearly distinguishable differences in texture and pattern within the same production run

V3
Moderate variation - V3: significant variation in texture, pattern and colour from tile to tile within the same production run. The colour range should be viewed before selecting the material

V4
Substantial/random variation - V4: random differences from tile to tile. One tile may have totally different texture and colour from another. The colour range should be viewed before selecting the material

Certificazioni



ISO 14001



EPD Italy



HPD



ISO 50001



ISO 17889-1



CAM Sassuolo



ISO 45001



LEED Credits



CAM Fiorano



ISO 9001



QBUPEC F+



CE 001MRZI



Green Building Council



FDES



UKCA 001MRZUK



GPP



Declare



SASO

© Copyright by Marazzi Group S.r.l.
All rights reserved, Marazzi Group Srl a Socio Unico
Viale Regina Pacis, 39 41049 Sassuolo (MO) Italy
T +39 0536 860800 F +39 0536 860644
info@marazzi.it www.marazzi.it

La riproduzione dei colori è approssimativa. Le tabelle con i dati riferiti ai contenuti per scatole ed ai pesi degli imballi sono aggiornate al momento della stampa del catalogo, pertanto i dati elencati possono subire variazioni.

Marazzi Group ha la facoltà esclusiva di modificare e sostituire, anche solo parzialmente i componenti dei sistemi illustrati in questo folder, senza l'obbligo di darne preavviso.



MARAZZI