

FLOORS 20 MM

# Rocking20



MARAZZI



# Rocking20

Rocking20 brings the authentic energy of stone outdoors through a 20mm thick porcelain stoneware surface designed exclusively for outdoor use. The collection is available in the 60x60 format, in White, Beige, Grey, Anthracite, Multicolor and Tobacco. The chromatic variety and material feel of stone define resistant, reliable and coordinated surfaces throughout. Ideal for terraces, gardens, walkways and outdoor flooring with a natural and decisive character.

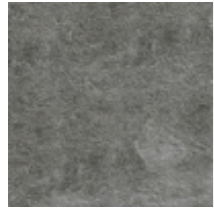




# Rocking20 Index

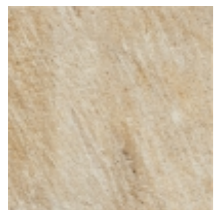
# Rocking20

- Colorbody Fine Porcelain Stoneware · Porcelain Stoneware



## Anthracite

| Formato | Superfici          | Codice | Descrizione                      | Spessore | Rett. | Caratteristiche tecniche              | Utilizzo | Premium Tech | R    | BCR    | Pendulum Class | Pend. PTV >36 | Australian pendulum | DCOF    | Destinazioni d'uso | V  | Pezzi per scatola | Mq   | Kg    | Scatole per pallet | Mq    | Kg       |
|---------|--------------------|--------|----------------------------------|----------|-------|---------------------------------------|----------|--------------|------|--------|----------------|---------------|---------------------|---------|--------------------|----|-------------------|------|-------|--------------------|-------|----------|
| 60x60cm | Structured Surface | M191   | Rocking20 Anthracite Rettificato | MM 20    | .     | Frost proof, Resistance deep abrasion | Floor    |              | R11B | > 0.40 | Class 3        | 36+ Slider 96 |                     | >= 0.60 | H                  | V4 | 2                 | 0,72 | 32,73 | 32                 | 23,04 | 1.047,27 |



## Beige

| Formato | Superfici          | Codice | Descrizione                 | Spessore | Rett. | Caratteristiche tecniche              | Utilizzo | Premium Tech | R    | BCR    | Pendulum Class | Pend. PTV >36 | Australian pendulum | DCOF    | Destinazioni d'uso | V  | Pezzi per scatola | Mq   | Kg    | Scatole per pallet | Mq    | Kg       |
|---------|--------------------|--------|-----------------------------|----------|-------|---------------------------------------|----------|--------------|------|--------|----------------|---------------|---------------------|---------|--------------------|----|-------------------|------|-------|--------------------|-------|----------|
| 60x60cm | Structured Surface | M18X   | Rocking20 Beige Rettificato | MM 20    | .     | Frost proof, Resistance deep abrasion | Floor    |              | R11B | > 0.40 | Class 3        | 36+ Slider 96 |                     | >= 0.60 | H                  | V4 | 2                 | 0,72 | 31,62 | 32                 | 23,04 | 1.011,86 |



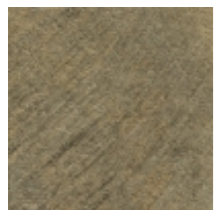
## Grey

| Formato | Superfici          | Codice | Descrizione                | Spessore | Rett. | Caratteristiche tecniche              | Utilizzo | Premium Tech | R    | BCR    | Pendulum Class | Pend. PTV >36 | Australian pendulum | DCOF    | Destinazioni d'uso | V  | Pezzi per scatola | Mq   | Kg    | Scatole per pallet | Mq    | Kg       |
|---------|--------------------|--------|----------------------------|----------|-------|---------------------------------------|----------|--------------|------|--------|----------------|---------------|---------------------|---------|--------------------|----|-------------------|------|-------|--------------------|-------|----------|
| 60x60cm | Structured Surface | M190   | Rocking20 Grey Rettificato | MM 20    | .     | Frost proof, Resistance deep abrasion | Floor    |              | R11B | > 0.40 | Class 3        | 36+ Slider 96 |                     | >= 0.60 | H                  | V4 | 2                 | 0,72 | 31,61 | 32                 | 23,04 | 1.011,41 |



## Multicolor

| Formato | Superfici          | Codice | Descrizione                      | Spessore | Rett. | Caratteristiche tecniche              | Utilizzo | Premium Tech | R    | BCR    | Pendulum Class | Pend. PTV >36 | Australian pendulum | DCOF    | Destinazioni d'uso | V  | Pezzi per scatola | Mq   | Kg    | Scatole per pallet | Mq    | Kg       |
|---------|--------------------|--------|----------------------------------|----------|-------|---------------------------------------|----------|--------------|------|--------|----------------|---------------|---------------------|---------|--------------------|----|-------------------|------|-------|--------------------|-------|----------|
| 60x60cm | Structured Surface | M18Z   | Rocking20 Multicolor Rettificato | MM 20    | .     | Frost proof, Resistance deep abrasion | Floor    |              | R11B | > 0.40 | Class 3        | 36+ Slider 96 |                     | >= 0.60 | H                  | V4 | 2                 | 0,72 | 32,58 | 32                 | 23,04 | 1.042,53 |



## Tobacco

| Formato | Superfici          | Codice | Descrizione                   | Spessore | Rett. | Caratteristiche tecniche              | Utilizzo | Premium Tech | R    | BCR    | Pendulum Class | Pend. PTV >36 | Australian pendulum | DCOF    | Destinazioni d'uso | V  | Pezzi per scatola | Mq   | Kg    | Scatole per pallet | Mq    | Kg       |
|---------|--------------------|--------|-------------------------------|----------|-------|---------------------------------------|----------|--------------|------|--------|----------------|---------------|---------------------|---------|--------------------|----|-------------------|------|-------|--------------------|-------|----------|
| 60x60cm | Structured Surface | M18Y   | Rocking20 Tobacco Rettificato | MM 20    | .     | Frost proof, Resistance deep abrasion | Floor    |              | R11B | > 0.40 | Class 3        | 36+ Slider 96 |                     | >= 0.60 | H                  | V4 | 2                 | 0,72 | 32,52 | 32                 | 23,04 | 1.040,65 |



## White

| Formato | Superfici          | Codice | Descrizione                 | Spessore | Rett. | Caratteristiche tecniche              | Utilizzo | Premium Tech | R    | BCR    | Pendulum Class | Pend. PTV >36 | Australian pendulum | DCOF    | Destinazioni d'uso | V  | Pezzi per scatola | Mq   | Kg    | Scatole per pallet | Mq    | Kg       |
|---------|--------------------|--------|-----------------------------|----------|-------|---------------------------------------|----------|--------------|------|--------|----------------|---------------|---------------------|---------|--------------------|----|-------------------|------|-------|--------------------|-------|----------|
| 60x60cm | Structured Surface | M18W   | Rocking20 White Rettificato | MM 20    | .     | Frost proof, Resistance deep abrasion | Floor    |              | R11B | > 0.40 | Class 3        | 36+ Slider 96 |                     | >= 0.60 | H                  | V4 | 2                 | 0,72 | 32,61 | 32                 | 23,04 | 1.043,48 |

# Legenda

## Destinazioni d'uso

**D**  
Tiles suitable only for residential bathrooms and bedrooms; any type of abrasion must be avoided.

**E**  
Tiles suitable for any room of a house except for entrance areas and kitchens. Low stress abrasive wear.

**F**  
Tiles suitable for any room of a house without direct access from the outside or access not protected by doormats. Average stress abrasive wear.

**G**  
Materials suitable for rooms subject to medium-heavy abrasion, such as detached houses and light-traffic commercial buildings.

**H**  
Materials suitable for situations of relatively hard abrasion in environments without protection against scratching, both public and private.

## Variazioni cromatiche

**V0**  
Monochromatic - V0: tiles of the same shade are very uniform, in just one colour

**V1**  
Uniform appearance - V1: uniform colour with only minimal differences between tiles in the same production run

**V2**  
Slight variation - V2: clearly distinguishable differences in texture and pattern within the same production run

**V3**  
Moderate variation - V3: significant variation in texture, pattern and colour from tile to tile within the same production run. The colour range should be viewed before selecting the material

**V4**  
Substantial/random variation - V4: random differences from tile to tile. One tile may have totally different texture and colour from another. The colour range should be viewed before selecting the material

# Certificazioni



ISO 14001



LEED Credits



CE 001MRZI



ISO 9001



QBUPEC F+



UKCA  
001MRZUK



Green Building  
Council



FDES



SASO



GPP



Declare



EPD Italy



HPD



ISO 17889-1



CAM Sassuolo

© Copyright by Marazzi Group S.r.l.  
All rights reserved, Marazzi Group Srl a Socio Unico  
Viale Regina Pacis, 39 41049 Sassuolo (MO) Italy  
T +39 0536 860800 F +39 0536 860644  
info@marazzi.it www.marazzi.it

La riproduzione dei colori è approssimativa. Le tabelle con i dati riferiti ai contenuti per scatole ed ai pesi degli imballi sono aggiornate al momento della stampa del catalogo, pertanto i dati elencati possono subire variazioni.

Marazzi Group ha la facoltà esclusiva di modificare e sostituire, anche solo parzialmente i componenti dei sistemi illustrati in questo folder, senza l'obbligo di darne preavviso.



**MARAZZI**