

FLOORS 20 MM

Mystone Silverstone20



MARAZZI



Mystone Silverstone20

As if shaped for the outdoors, Mystone Silverstone20 interprets sandstone in porcelain stoneware with a 20 mm thickness. Designed only for outdoor spaces, it is available in Nero, Beige and Antracite, in the 60x60 size. The Tecnico finish combines aesthetic balance, slip resistance and high durability for terraces, walkways and contemporary outdoor spaces. Its sober, natural look ensures visual continuity, design coherence and a refined architectural presence.



Mystone Silverstone20 Index

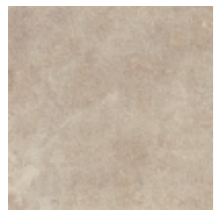
Mystone Silverstone20

- Colorbody Fine Porcelain Stoneware



Antracite

Formato	Superfici	Codice	Descrizione	Spessore	Rett.	Caratteristiche tecniche	Utilizzo	Premium Tech	R	BCR	Pendulum Class	Pend. PTV >36	Australian pendulum	DCOF	Destinazioni d'uso	V	Pezzi per scatola	Mq	Kg	Scatole per pallet	Mq	Kg
60x60cm	Structured Surface	MLD3	Silver Stone 20 Antracite Rt	MM 20	.	Frost proof, Resistance deep abrasion	Floor	High Performance	R11B	> 0.40	Class 3	36+ Slider 96		>= 0.60	H	V2	2	0,72	32,82	32	23,04	1.050,14



Beige

Formato	Superfici	Codice	Descrizione	Spessore	Rett.	Caratteristiche tecniche	Utilizzo	Premium Tech	R	BCR	Pendulum Class	Pend. PTV >36	Australian pendulum	DCOF	Destinazioni d'uso	V	Pezzi per scatola	Mq	Kg	Scatole per pallet	Mq	Kg
60x60cm	Structured Surface	MLD2	Silver Stone 20 Beige Rt	MM 20	.	Frost proof, Resistance deep abrasion	Floor	High Performance	R11B	> 0.40	Class 3	36+ Slider 96		>= 0.60	H	V2	2	0,72	32,04	32	23,04	1.025,37



Nero

Formato	Superfici	Codice	Descrizione	Spessore	Rett.	Caratteristiche tecniche	Utilizzo	Premium Tech	R	BCR	Pendulum Class	Pend. PTV >36	Australian pendulum	DCOF	Destinazioni d'uso	V	Pezzi per scatola	Mq	Kg	Scatole per pallet	Mq	Kg
60x60cm	Structured Surface	MLD4	Silver Stone 20 Nero Rt	MM 20	.	Frost proof, Resistance deep abrasion	Floor	High Performance	R11B	> 0.40	Class 3	36+ Slider 96		>= 0.60	H	V2	2	0,72	32,40	32	23,04	1.036,90

Legenda

Destinazioni d'uso

D
Tiles suitable only for residential bathrooms and bedrooms; any type of abrasion must be avoided.

E
Tiles suitable for any room of a house except for entrance areas and kitchens. Low stress abrasive wear.

F
Tiles suitable for any room of a house without direct access from the outside or access not protected by doormats. Average stress abrasive wear.

G
Materials suitable for rooms subject to medium-heavy abrasion, such as detached houses and light-traffic commercial buildings.

H
Materials suitable for situations of relatively hard abrasion in environments without protection against scratching, both public and private.

Variazioni cromatiche

V0
Monochromatic - V0: tiles of the same shade are very uniform, in just one colour

V1
Uniform appearance - V1: uniform colour with only minimal differences between tiles in the same production run

V2
Slight variation - V2: clearly distinguishable differences in texture and pattern within the same production run

V3
Moderate variation - V3: significant variation in texture, pattern and colour from tile to tile within the same production run. The colour range should be viewed before selecting the material

V4
Substantial/random variation - V4: random differences from tile to tile. One tile may have totally different texture and colour from another. The colour range should be viewed before selecting the material

Certificazioni



ISO 14001



LEED Credits



CE 001MRZI



ISO 9001



QBUPEC F+



UKCA
001MRZUK



Green Building
Council



FDES



GPP



Declare



EPD Italy



HPD



ISO 17889-1



CAM Sassuolo

© Copyright by Marazzi Group S.r.l.
All rights reserved, Marazzi Group Srl a Socio Unico
Viale Regina Pacis, 39 41049 Sassuolo (MO) Italy
T +39 0536 860800 F +39 0536 860644
info@marazzi.it www.marazzi.it

La riproduzione dei colori è approssimativa. Le tabelle con i dati riferiti ai contenuti per scatole ed ai pesi degli imballi sono aggiornate al momento della stampa del catalogo, pertanto i dati elencati possono subire variazioni.

Marazzi Group ha la facoltà esclusiva di modificare e sostituire, anche solo parzialmente i componenti dei sistemi illustrati in questo folder, senza l'obbligo di darne preavviso.



MARAZZI